



Florida Department of
TRANSPORTATION

Thank you for joining us!

**The Virtual Public Meeting
will begin at 5 p.m.**

**SW Port St. Lucie Boulevard Widening
Project in the City of Port St. Lucie**

FPID 431752-6-52-01



Florida Department of
TRANSPORTATION

SW Port St. Lucie Boulevard Widening Project in the City of Port St. Lucie

FPID 431752-6-52-01

**Virtual Public Meeting (VPM)
Wednesday, Dec. 8, 2021**



Agenda

- Introductions
- Meeting Format
- Non-Discrimination Policy
- Rules of Engagement
- Project Video Presentation
- Questions and Answers
- Slide Show

SW Port St. Lucie Blvd. – Meet the Team



Mark Freeman
Construction Project Manager
FDOT District Four, Treasure Coast Operations



Christopher N. O'Reilly, P.E.
Engineer of Record
American Consulting Engineers of Florida



Steven Haines, P.E.
Senior Project Engineer
JMT, Inc.



Vandana Nagole, P.E.
Design Project Engineer
FDOT District IV Design



Luke Brolmann, P.E.
Project Administrator
JMT, Inc.



Beth Zsoka
Community Outreach
City of Port St. Lucie



Doug Conley
Contractor
Zahlene Enterprises, Inc.



Samantha Kayser
Community Outreach Specialist
The Corradino Group

Virtual Meeting Agenda

Meeting Format

- Presentation, Question & Answer
 - 5:00 p.m. to 5:30 p.m.
 - 5:30 p.m. to 6:00 p.m.
- Unguided PowerPoint Slide Show
 - If time allows after each Q&A



SW Port St. Lucie Boulevard and SW Tunis Boulevard
intersection
(pre-construction)

Title VI of the Civil Rights Act of 1964

The Florida Department of Transportation is required to comply with various **non-discrimination laws and regulations**, including **Title VI of the Civil Rights Act of 1964**.

Public participation is solicited without regard to race, color, national origin, age, sex, religion, disability, or family status.

Persons wishing to express concerns about Title VI may do so by contacting either:

District Four Title VI Coordinator,
Florida Department of Transportation
Sharon Singh Hagyan, (954) 777-4190,
Sharon.SinghHagyan@dot.state.fl.us

Statewide Title VI Coordinator,
Florida Department of Transportation
Jacqueline Paramore, (850) 414-4753,
jacqueline.paramore@dot.state.fl.us

<https://www.fdot.gov/equalopportunity/titlevicontacts.shtm>

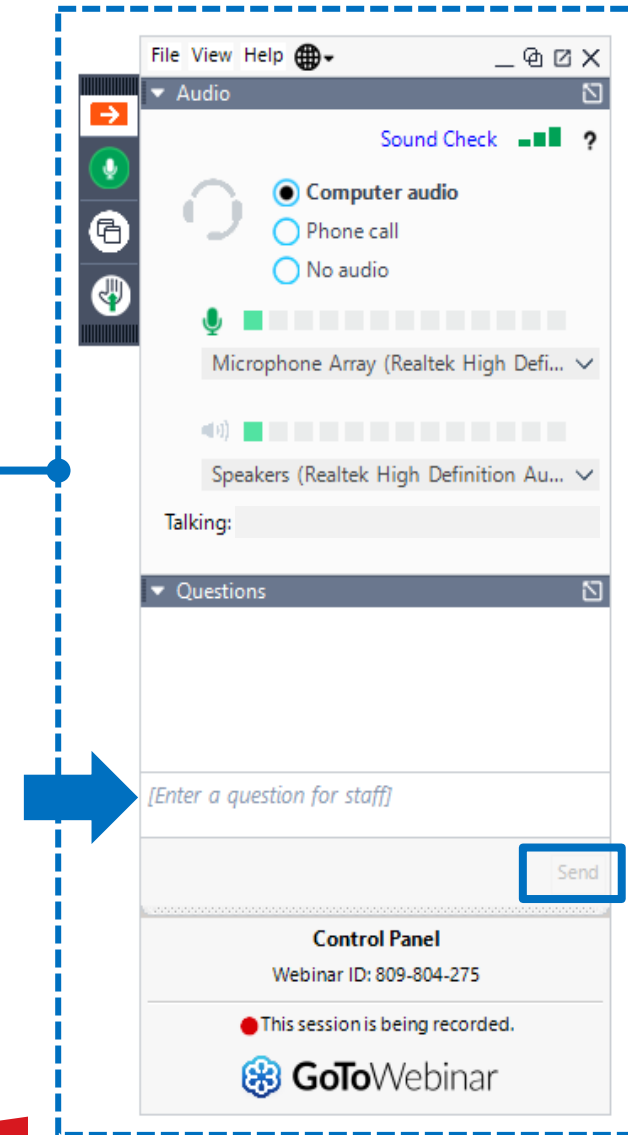
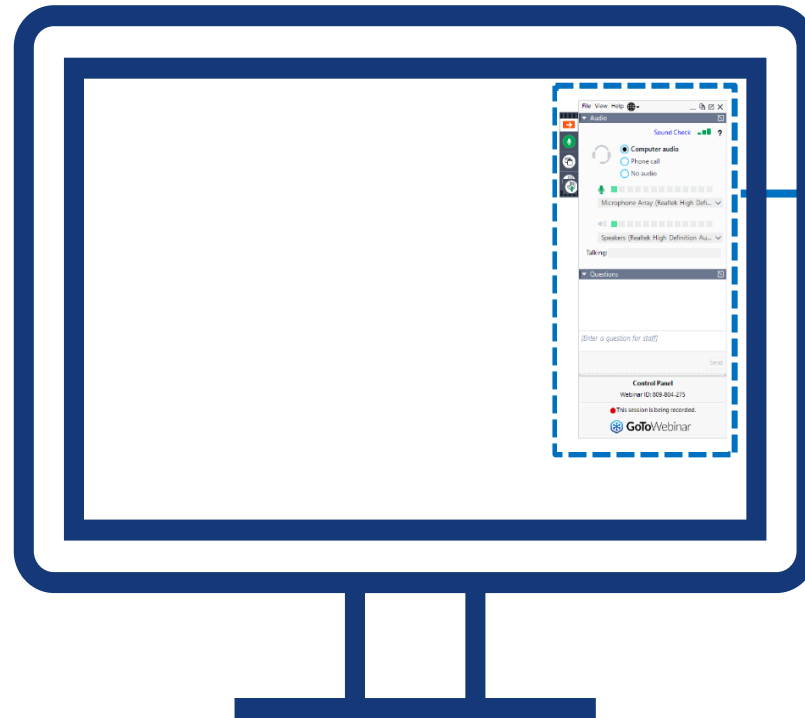
All inquiries or concerns will be handled according to FDOT procedure and in a prompt and courteous manner.

Online Attendee Control Panel

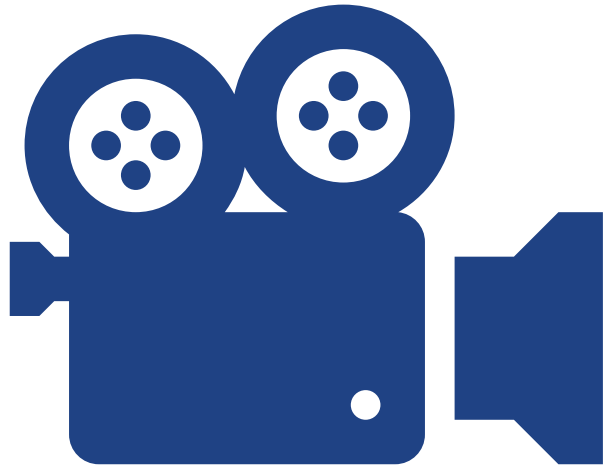
GoToWebinar Control Panel

Questions and comments can be entered into the question pane for the team to address directly after the presentation.

- ✓ Attendees are muted by default. Dial-in attendees are in listen only mode.
- ✓ To speak, please click the hand icon during the Question & Answer session.
- ✓ This meeting is being recorded. It will be posted to www.d4fdot.com.



Project Presentation



- Please enjoy the project video which includes information on the improvements to be completed, along with road and lane closure information.
- We will start the Question & Answer session after the video.



Florida Department of
TRANSPORTATION

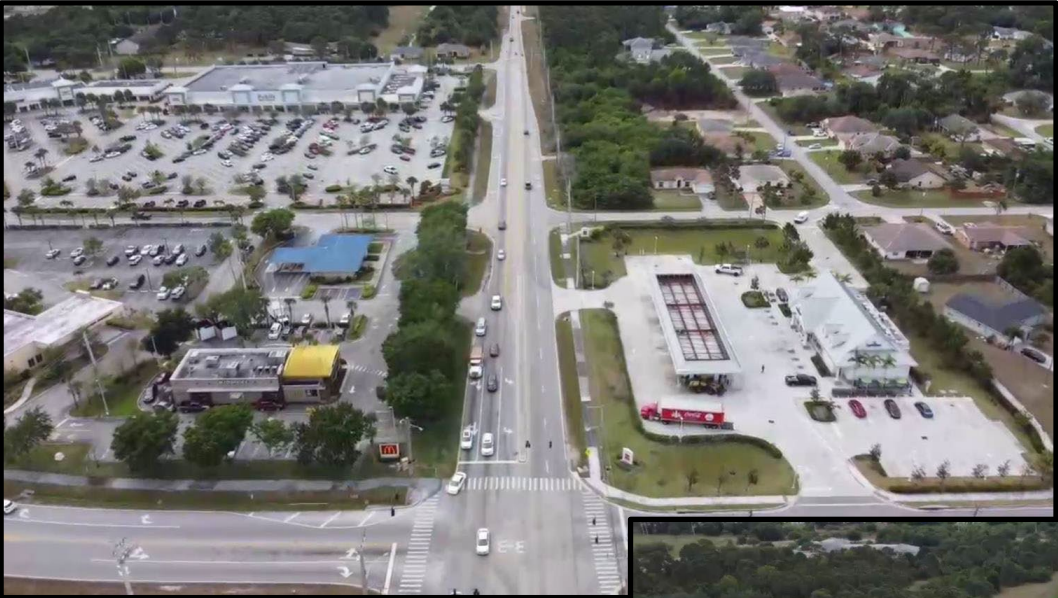
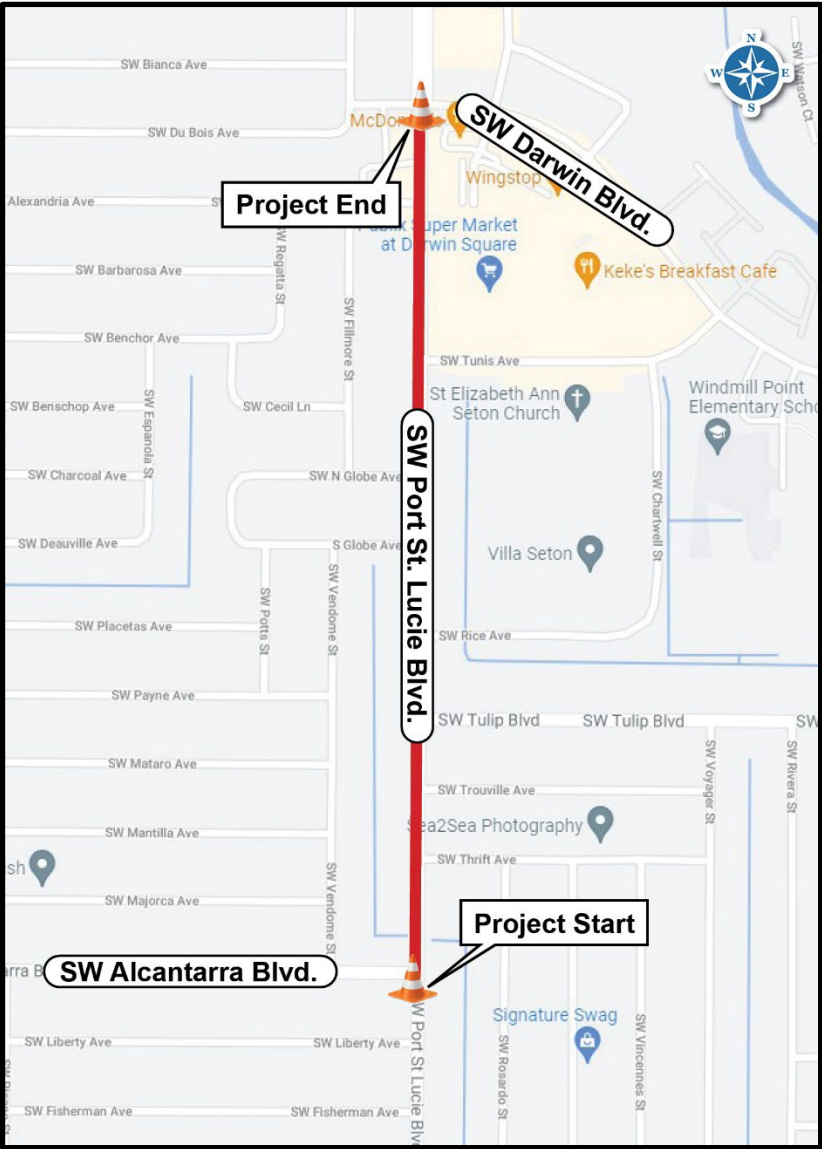
SW Port St. Lucie Blvd. Widening Project

The City of Port St. Lucie, as project sponsor, requested that the Florida Department of Transportation (FDOT)

District Four, design and construct these improvements through application to the St. Lucie Transportation Planning Organization and City of Port St. Lucie Resolution 18-R42.



Project Limits



Looking South – SW Port St. Lucie Blvd. at Darwin Blvd.



Looking South – SW Port St. Lucie Blvd. at Tunis Ave.

Project Overview

Purpose: Widen SW Port St. Lucie Blvd. from a two-lane undivided roadway to a four-lane divided roadway; install three (3) new signalized intersections with mast arms at SW Alcantarra Blvd., SW Tulip Blvd., and SW Tunis Blvd.; install a new median, sidewalks, drainage system, landscaping and irrigation, and perform turn lane and crosswalk improvements as well as signing, pavement markings and lighting upgrades.

Length: 0.713 miles

Contractor: Zahlene Enterprises, Inc.

Construction Start: December 13, 2021

Estimated Contract Cost: \$11 million

Contract Time: 709 calendar days
(not including weather and holidays)

Estimated Completion: Spring 2024



SW Port St. Lucie Boulevard and SW Darwin Boulevard intersection
(pre-construction)

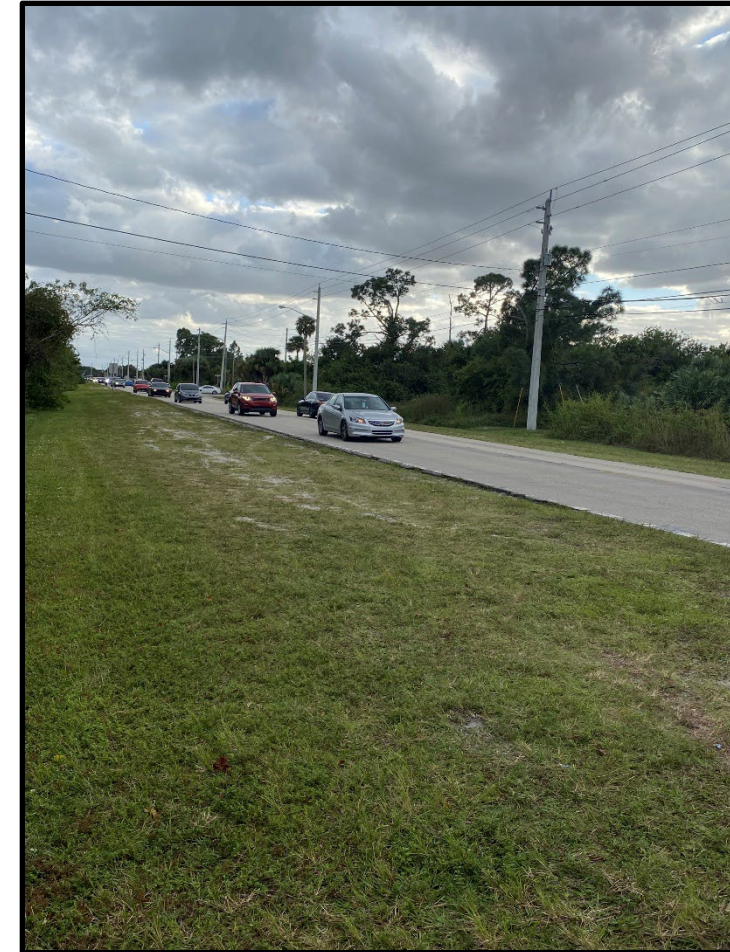
Scope of Work – Roadway & Pedestrian Updates

Roadway Improvements

- Widen SW Port St. Lucie Boulevard from a two-lane undivided roadway to a four-lane divided roadway
- Installation of one (1) dedicated right turn lane on SW Port St. Lucie Boulevard's north approach to SW Alcantarra Boulevard
- Construction of an 18-foot-wide raised median with curb and gutter, and landscaping including trees and plants, irrigation and stamped concrete

Pedestrian feature upgrades

- Installation of pedestrian signalization to meet current safety standards
- Ensure all crosswalks and curb ramps within project limits meet Americans with Disabilities Act (ADA) standards



SW Port St. Lucie Boulevard
(pre-construction)

Scope of Work – Roadway & Signalization Upgrades

Upgrading features to current standards

- Signing and pavement markings
- Drainage improvements including the installation of a new closed drainage system consisting of curb inlets and storm sewers

Signalization & Lighting Improvements

- Installation of three (3) new signalized intersections with mast arms at SW Alcantarra Boulevard, SW Tulip Boulevard, and SW Tunis Boulevard
- Upgrade existing lighting to new LED fixtures on existing FP&L poles
- Installation of new light poles on the east side of SW Port St. Lucie Boulevard



SW Tulip Boulevard and SW Port St. Lucie Boulevard
intersection
(pre-construction)



SW Alcantarra Boulevard and SW Port St. Lucie
Boulevard intersection
(pre-construction)

Scope of Work – Improving Access

Concrete Sidewalks

- Installation of new shared use paths will vary from 8'-10' wide on both sides of SW Port St. Lucie Boulevard



SW Alcantarra Boulevard
(pre-construction)



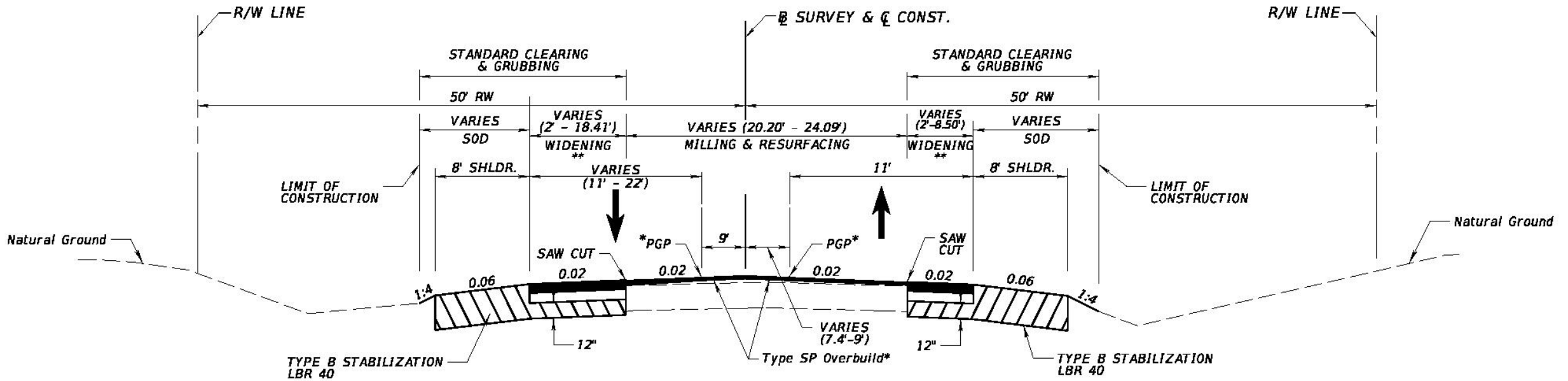
SW Tunis Boulevard and SW Port St. Lucie Boulevard intersection
(pre-construction)

Traffic Impacts & Construction Phasing

Maintenance of Traffic

- Work will be done in five (5) major phases to minimize impacts to the construction corridor
- Lane closures can be expected:
 - Daytime, Monday through Sunday from 9:00 a.m. to 3:00 p.m.
 - Nighttime, Monday through Sunday from 7:00 p.m. to 6:00 a.m.
- Construction along side streets will be staggered to maintain access to Port St. Lucie Boulevard
- Temporary signals will be installed during construction at SW Tunis Boulevard and SW Darwin Boulevard
- Pedestrian access will be maintained; should sidewalk closures be required, detours will be clearly marked
- Access to businesses and residences will be maintained at all times

Typical Section – SW Port St. Lucie Blvd.

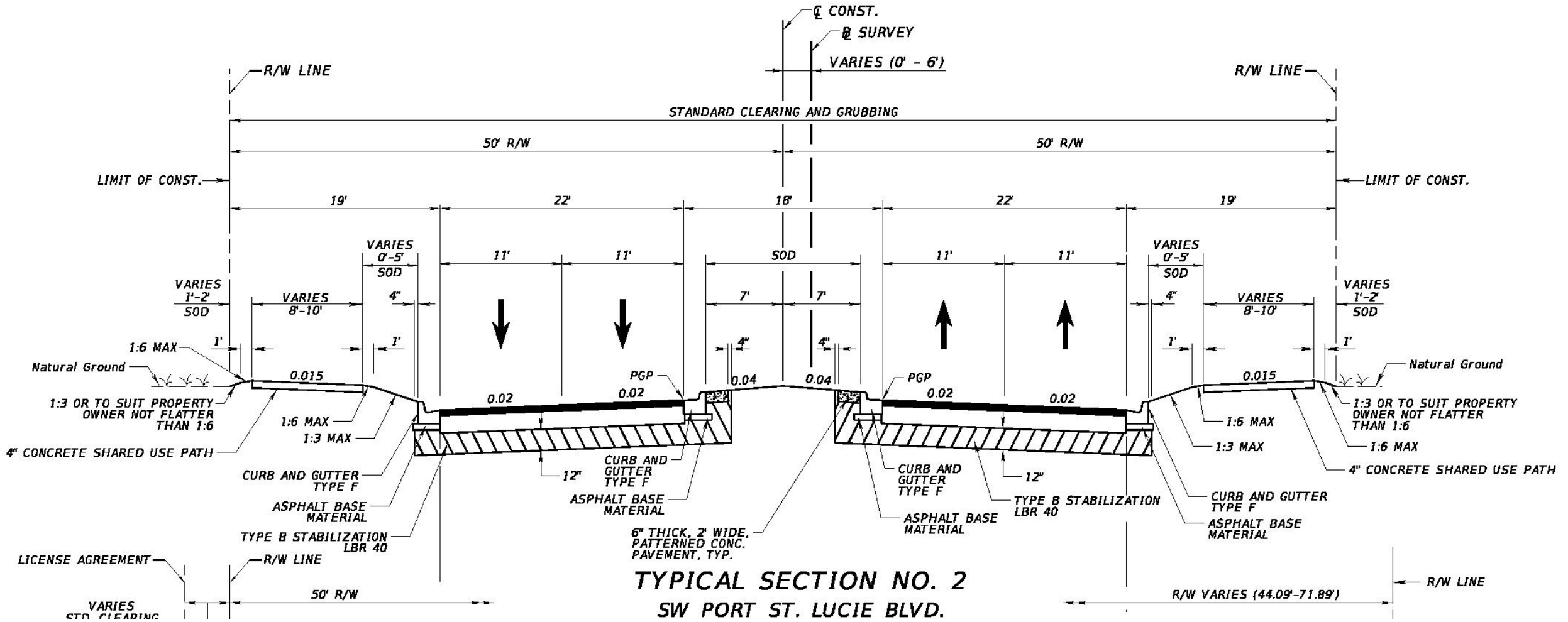


TYPICAL SECTION NO. 1
SW PORT ST. LUCIE BLVD.
STA. 1202+36.00 TO STA. 1211+86.05

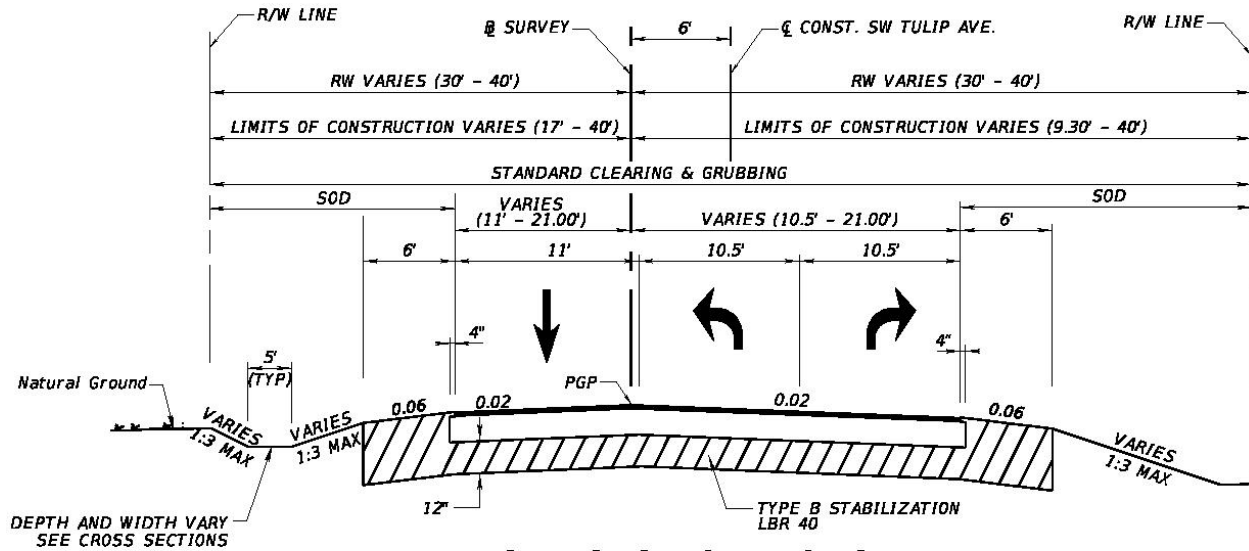
* OVERBUILD FROM STA. 1211+40.00 TO STA. 1211+86.05

** ACTUAL WIDTH OF BASE WIDENING MAY VARY DUE TO EXISTING PAVEMENT WIDTH A UNIFORM WIDTH BASE WIDENING STRIP MAY BE CONSTRUCTED AT NO ADDITIONAL COMPENSATION.

Typical Section – SW Port St. Lucie Blvd.

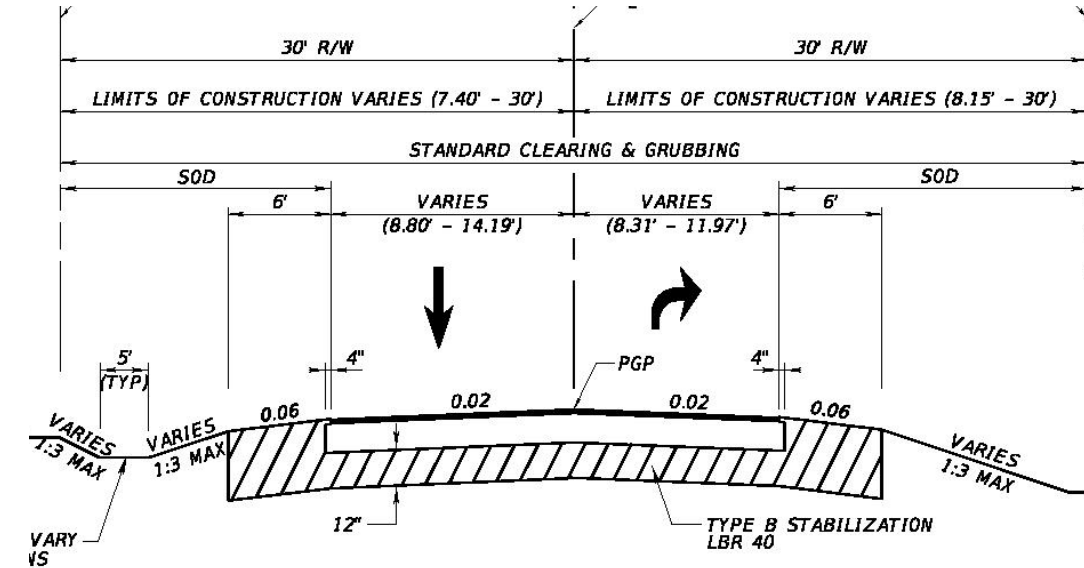


Typical Section – Side Streets



**TYPICAL SECTION NO. 3
SIDE STREETS
NEW CONSTRUCTION**

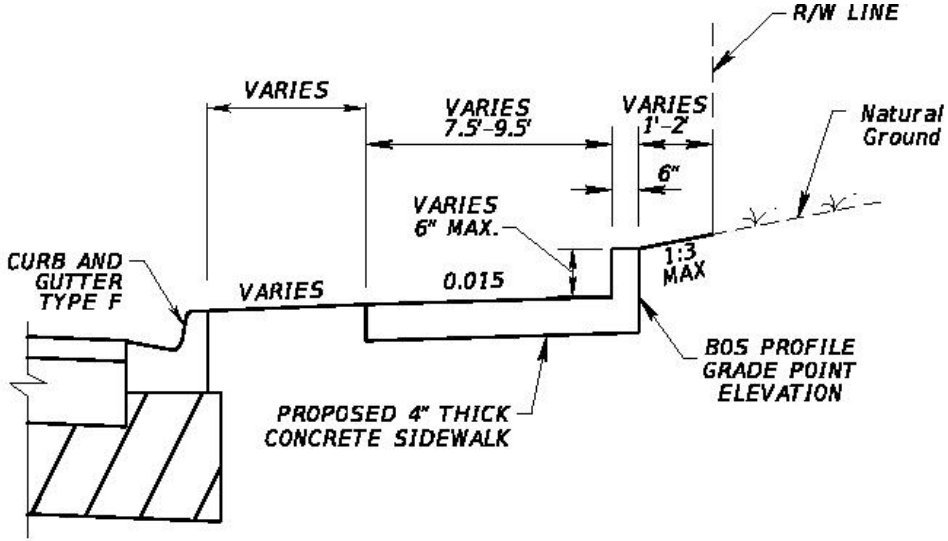
OPTIONAL BASE GROUP 6 WITH
TYPE SP STRUCTURAL COURSE (TRAFFIC B) (2.5")



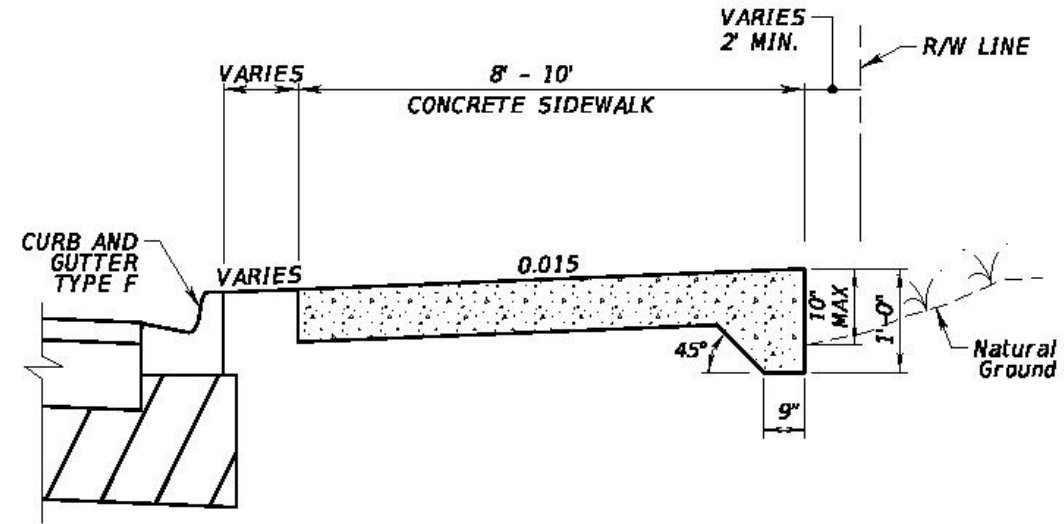
**TYPICAL SECTION NO. 4
SIDE STREETS
NEW CONSTRUCTION**

OPTIONAL BASE GROUP 6 WITH
TYPE SP STRUCTURAL COURSE (TRAFFIC B) (1.5")

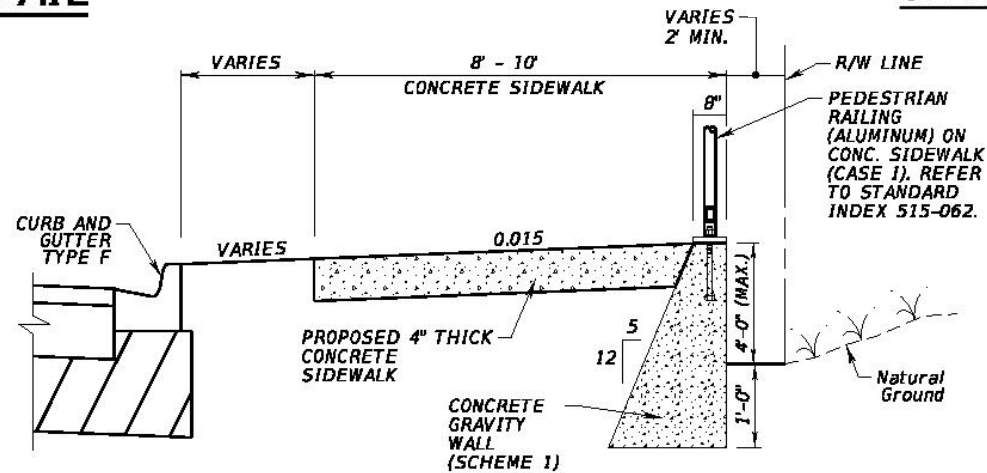
Typical Section – Sidewalk



SIDEWALK EDGE UP DETAIL

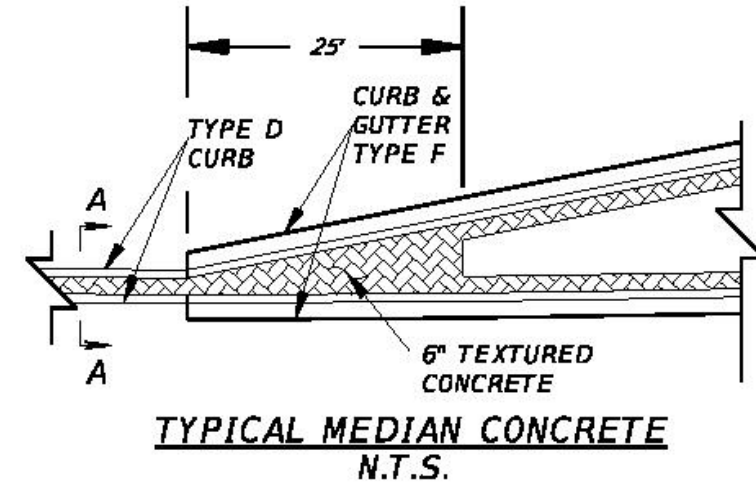
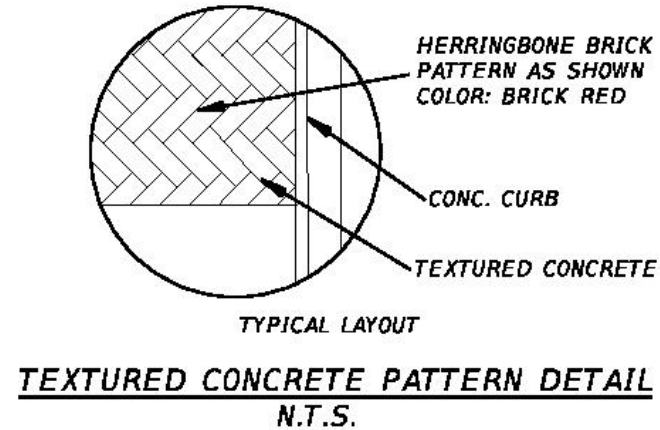
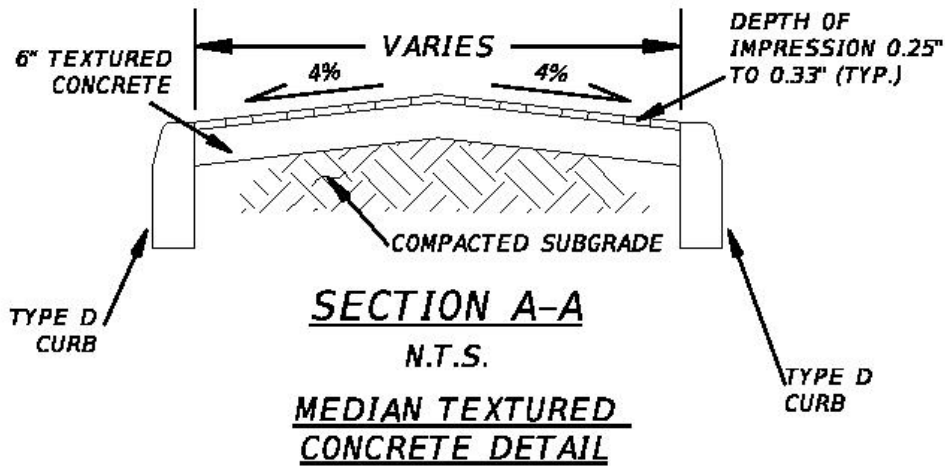


SIDEWALK EDGE DOWN DETAIL



SIDEWALK WITH GRAVITY WALL DETAIL

Typical Section – Median



Traffic Impacts & Construction Phasing

Pre-phase I

- Installation of temporary traffic control devices including temporary pavement markings as needed
- Erosion control devices
- Drainage construction
- Installation of northbound temporary pavement and 6-foot unpaved northbound shoulder



SW Port St. Lucie Boulevard and SW Tulip Boulevard intersection
(pre-construction)

Construction Phasing

Phase I

– SW Port St. Lucie Boulevard

- Shift traffic onto temporary roadway
- Construct southbound roadway from SW Alcantarra Boulevard to SW Darwin Boulevard and SW Tulip Boulevard side street
- Complete southbound drainage improvements
- Install southbound lighting and signalization
- Installation of temporary pavement markings



Looking south on SW Port St. Lucie Blvd.
from SW Tunis Blvd.
(pre-construction)

Construction Phasing

Phase II

– SW Port St. Lucie Boulevard

- Shift traffic onto the new southbound roadway
- Construct northbound roadway from SW Alcantarra Boulevard to SW Darwin Boulevard and SW Alcantarra Boulevard side street
 - Median will be constructed in phases to maintain side street access
- Complete northbound drainage improvements
- Installation of northbound lighting, signalization, and landscaping
- Installation of temporary pavement markings



Looking north on SW Port St. Lucie Blvd. from SW N Globe Ave.
(pre-construction)

Construction Phasing

Phase III

- Shift traffic onto outside lanes of newly constructed northbound and southbound roadway on SW Port St. Lucie Boulevard
- Construct remaining median curb and gutters
- Construct new pavement at SW Alcantarra Boulevard and SW Tulip Boulevard
- Finalize placement of signalization



Northbound SW Port St. Lucie Boulevard
(pre-construction photo)

Construction Phasing

Phase IV

- SW Port St. Lucie Boulevard

- Install median landscaping
- Install final friction course
- Install final striping

- SW Alcantarra Boulevard & SW Tulip Boulevard

- Mill and resurface roadways
- Installation of final striping
- Shift traffic onto newly constructed roadway



SW Alcantarra Boulevard and SW Port St. Lucie Boulevard
intersection
(pre-construction)

SW Port St. Lucie Blvd. Project Aerial



Looking south on SW Port St. Lucie Blvd. from just south of SW Darwin Blvd.
(pre-construction)

SW Port St. Lucie Blvd. Project Aerial



Looking north on SW Port St. Lucie Blvd. from SW Alcantarra Blvd.
(pre-construction)

Safety & Local Coordination

- **Public Safety is our Top Priority!**

- **Work Zone Signage & Maintenance of Traffic**

- Advanced warning and project signage will be placed throughout the construction corridor to alert the traveling public

- **Local Agency & Stakeholder Coordination**

- The project team will continue working closely with local stakeholders including the City of Port St. Lucie, schools, neighborhoods and other local agencies to ensure safety standards are met and impacts to the public are minimized in any way possible

- **Emergency vehicles will be provided access at all times**

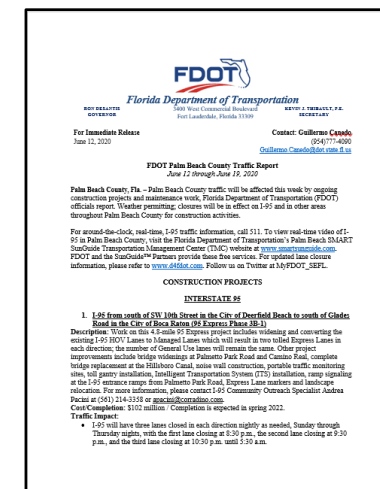
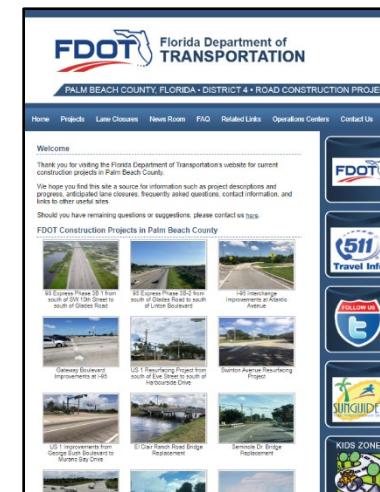


Lighted Message Board

Community Outreach

For more information on the project...

- Project Website: www.d4fdot.com
- Weekly Lane Closure Press Release
- Please contact Samantha Kayser, Community Outreach Specialist, to be added to the lane closure email notification blast list
 - (772) 579-5479
 - skayser@corrardino.com



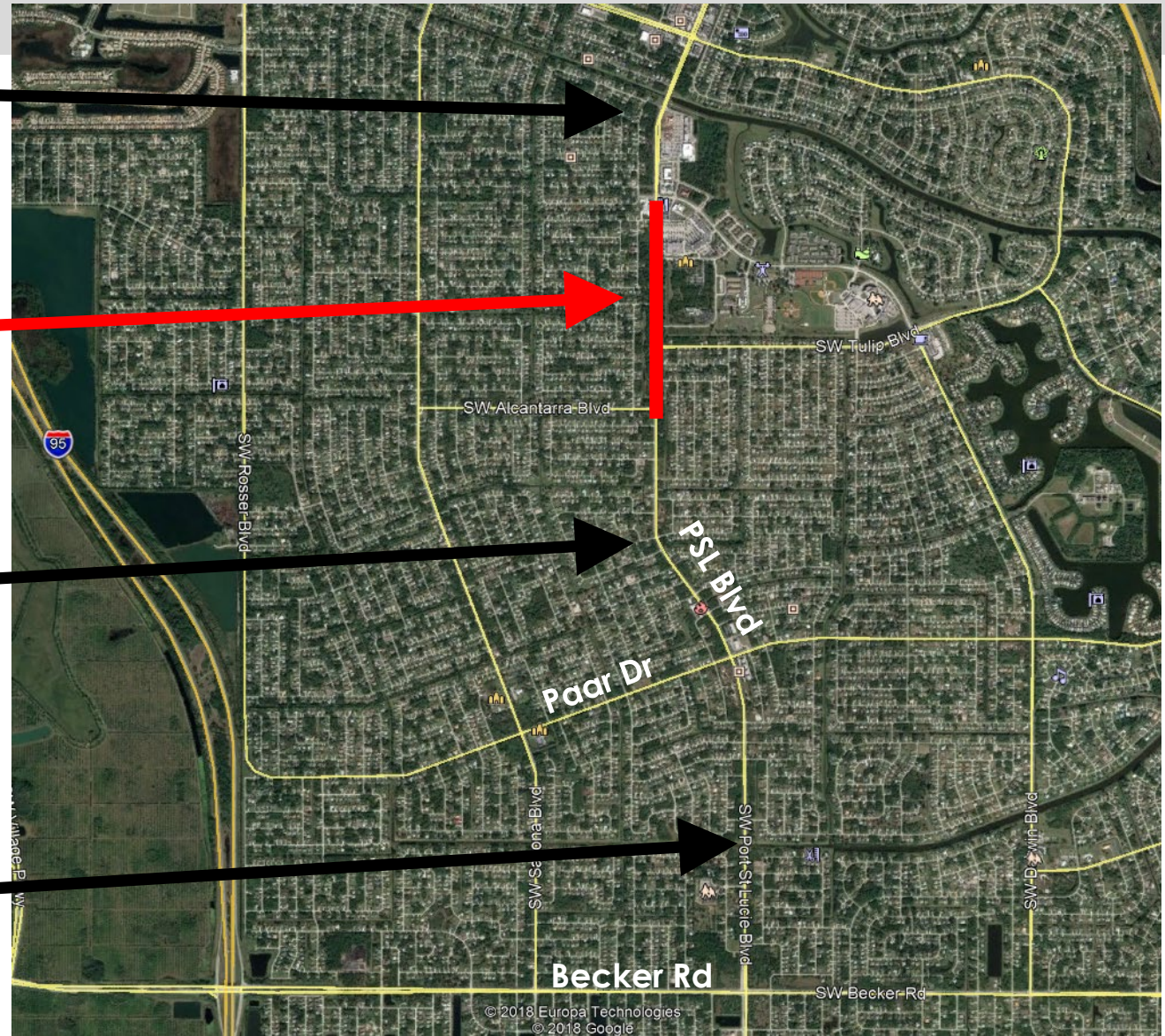
Construction Project Segments Port St. Lucie Blvd. - South

Gatlin Blvd. to Darwin Blvd.
Segment 3
0.6 Mile
Design – 100%
Const. - \$8.0M (Dec 2021 – Dec 2023)
Const. – City of Port St. Lucie

Darwin Blvd. to Alcantarra Blvd.
Segment 2.1
0.713 Mile
Design – 100%
Const. - \$11M (Dec 2021 – Spring 2024)
Const. – FDOT District Four

Alcantarra Blvd. to Paar Dr.
Segment 2.2
1.076 Mile
Design – 100%
Const. - \$16.4M (Oct 2024 – Oct 2026)
Const. - TBD

Paar Dr. to Becker Rd.
Segment 1
1.119 Mile
Design – May 2020 – Oct 2024)
Const. - \$15.2M estimated, (Oct 2026 – Oct 2028, est.)
Const. - TBD



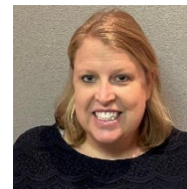
Adjacent Project Information

Port St. Lucie Boulevard South Project Segment 3

- **Project Limits:** From SW Gatlin Boulevard to SW Darwin Boulevard
- **Scope of Work:** Reconstruction of the existing four-lane roadway; installation of new turn lanes; drainage improvements; construction of multi-use paths, curb and gutter, landscaped medians, irrigation, signalized intersections, and roadway and pedestrian lighting.
- **Construction Start:** Project activities started in October 2021 including utility coordination. Active construction activities starting December 2021.
- **Estimated Completion:** Late 2023
- For more information, please contact Beth Zsoka, Communications Public Works, City of Port St. Lucie

– (772) 871-5176

– bszoka@cityofpsl.com



Beth Zsoka

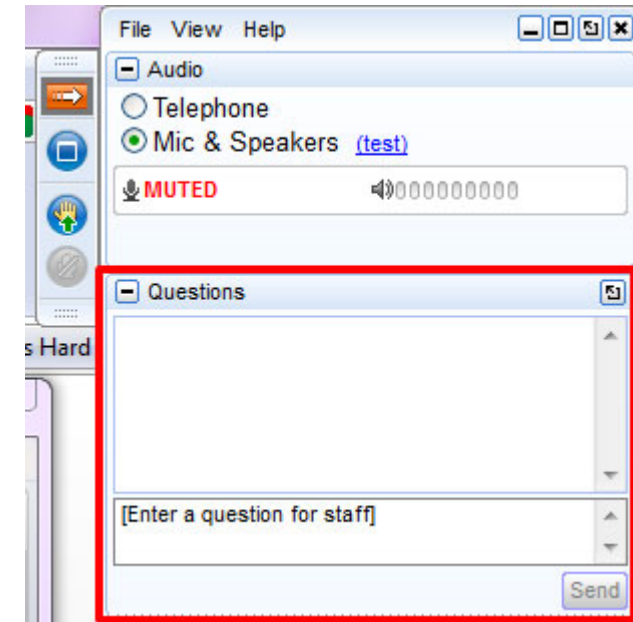
Communications Public Works
City of Port St. Lucie



Questions and Comments

Questions and comments can be entered into the question pane for the team to address directly.

Throughout the project, questions or comments can be submitted via email or phone to Samantha Kayser.



skayser@corrardino.com



(772) 579-5479

SW Port St. Lucie Blvd. – Live Q&A



Mark Freeman

Construction Project Manager
FDOT District Four, Treasure Coast Operations



Steven Haines, P.E.

Senior Project Engineer
JMT, Inc.



Luke Brolmann, P.E.

Project Administrator
JMT, Inc.



Doug Conley

Contractor
Zahlene Enterprises, Inc.



Christopher N. O'Reilly, P.E.

Engineer of Record
American Consulting Engineers of Florida



Vandana Nagole, P.E.

Design Project Engineer
FDOT District IV Design



Beth Zsoka

Community Outreach
City of Port St. Lucie



Samantha Kayser

Community Outreach Specialist
The Corradino Group

Thank you for attending!

**This concludes the
Virtual Public Meeting for the
SW Port St. Lucie Blvd. Widening Project
in the City of Port St. Lucie, FL**





**DRIVE SOBER OR
GET PULLED OVER**



Drinking and Driving Don't Mix!



Florida Department of
TRANSPORTATION

Thank you for joining us!

**The Virtual Public Meeting
will begin at 5:30 p.m.**

**SW Port St. Lucie Boulevard Widening
Project in the City of Port St. Lucie**

FPID 431752-6-52-01